

was £1,950

NOW
£1,350

Paid **S.Korea** **TEFL** **Internship** TEACH AND TRAVEL

m2r
education

...CUT OUT
THE
'HARD
WORK'
IN
WORKING
OVERSEAS..





TABLE OF CONTENTS



歌舞伎町一番街

4 - WHY TEACH IN S.KOREA?

5 - WHAT DO I NEED?

6 - INCLUDED...



7 - WHERE...

8 - THE JOURNEY...

9,10 - ORIENTATION...



11 - TEACHING...

12 - 120 HOUR TEFL COURSE...

13 - SALARY...



14 - EARN EXTRA MONEY!

15 - COST...

16 - FAQ

WHY TEACH IN S.KOREA?

Are you hungry for an Asia adventure? Is South Korea still on your go-to-list? If you're craving to teach and love travel, then our Paid South Korea TEFL Internship is perfect for you!

Rather than making the mistakes people normally make when working overseas, we offer you unparalleled support to get you ready. And we qualify you as an internationally recognised TEFL teacher with our 120 hour online TEFL course. On top of this, you will receive a one-week online orientation, to get you up to speed on Korean culture and history!



But the support doesn't end there! When you land in South Korea, we are there to pick you and the other like-minded travellers up from the airport. And then your 12 month teaching experience begins! Be it a public or private school, you'll be utilising your TEFL qualification to stretch those teaching legs. With your free time, your appetite will be satiated with karaoke, k-pop, Korean fried chicken and Kimchi!



WHAT DO I NEED?

- **Hold a passport and bachelor's degree from South Africa, UK, Ireland, USA, Canada, Australia or New Zealand**
- **Completed at least 120 hour TEFL course (included with internship)**
- **Be a fluent English speaker**
- **Aged between 21-35**
- **No visible tattoos that can't be covered**
- **In good health and vaccinated**
- **No criminal record**



WHAT I DON'T NEED!

- **Teaching experience**
- **Korean language**

The teaching internship cuts out the hard-work in working overseas, with our pre-departure and in-country support. Different from a job, this package covers all the guidance and benefits needed to have a life-changing teaching experience, avoiding the mistakes people often make when working internationally.

The “do it yourself reality” can be daunting for people and also leave them vulnerable to schools that may not have their best interests at heart. Be it organising documentation, finding legit positions, academic guidance or settling in – we are here to support you.



INCLUDED...

Free accommodation

Accredited 120 hour TEFL course

Guaranteed 12+ month teaching placement

Visa support

Potential to extend contract for no cost

One-way flight reimbursement

Continuous in-country support

Up to approx. ₩2,033,660 monthly salary

1 week cultural orientation

Airport pickup

Future employment support

Paid holidays

Up to approx. ₩2,033,660 completion bonus

Pre-departure preparation and advice

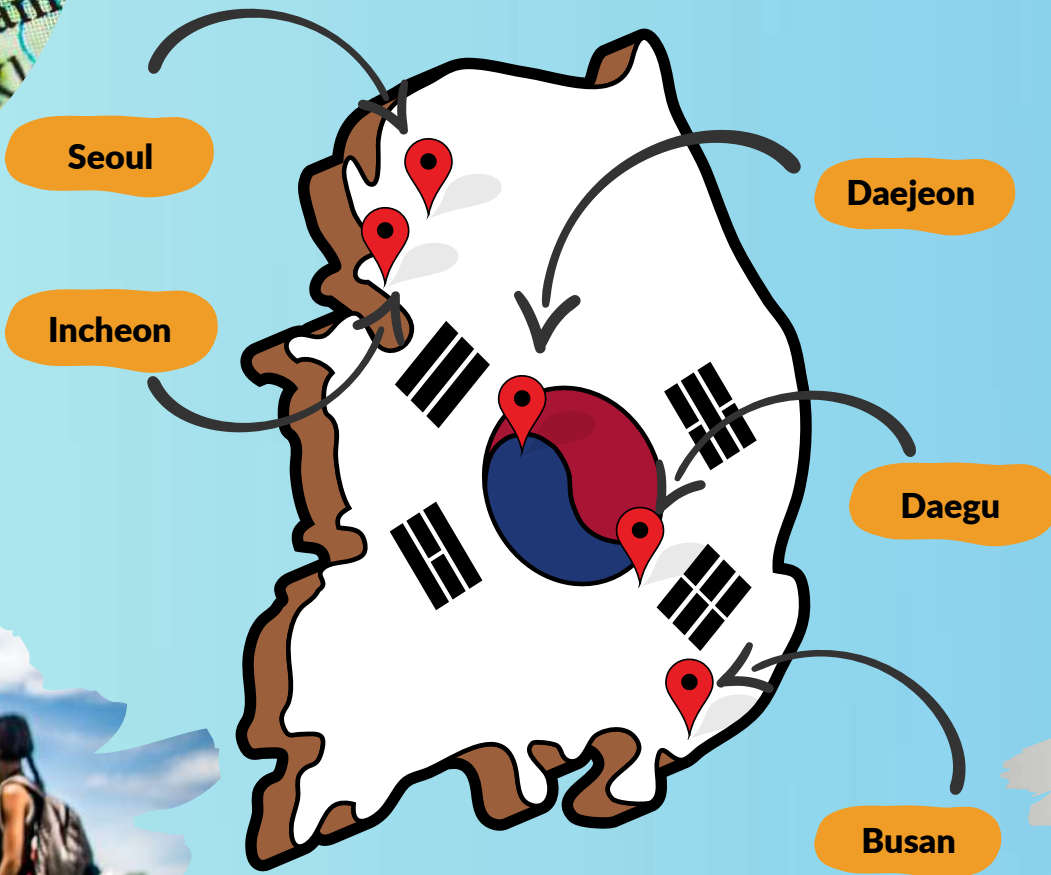
Help to create a great CV with video or audio

Free digital language English course

Guidance at schools when teaching, as well as academic guidance



WHERE?



THE JOURNEY...

land in
South Korea

orientation

book a flight

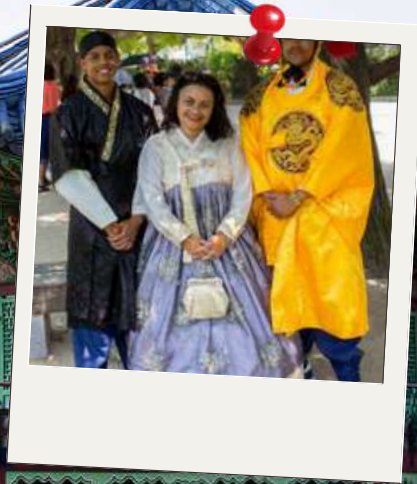
teaching
placement

sort documentation
pack bags

complete 120
hour course

do it again?

ORIENTATION



KOREAN LANGUAGE & CULTURE LECTURES

TAEKWONDO CLASS

KOREAN COOKING LESSONS

The importance of gaining an understanding of language, history and culture is imperative to making a success of teaching in South Korea. This is because many of the issues that one will face when teaching in a foreign country vastly different from their own will be rooted in cultural differences and the language barrier.

"The hanbok experience was my most memorable moment and meeting new like-minded people. I had such a fun time overall so thank you for the weekends!"

ORIENTATION...

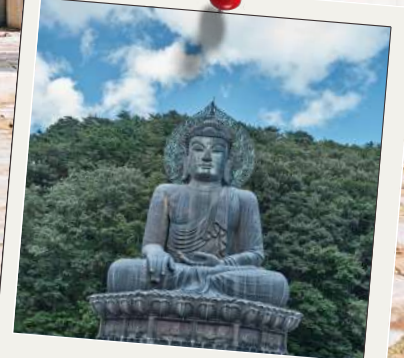
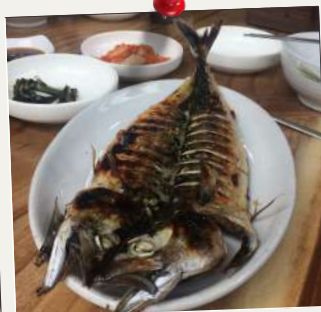
TRADITIONAL TEA TASTING

VISIT JONGMYO SHRINE

HANBOK CAFE VISIT

GYEONGBOKGUNG PALACE TOUR

When our teachers are in the country, active-learning cultural excursions of various sites will build their cultural and historical knowledge. The in-country excursions are punctuated by in-class language lessons, designed to establish a basic Korean language understanding in participants and ultimately help them to make a relatively seamless transition into life in South Korea.



TEACHING...



Placements are either in a:

Private school (Hagwons)

Public school



Hogwan

30-35 hours a week
Class size 8-15
Morning, afternoon & evening hours
Well equipped classrooms
Technology
More than one TEFL teacher at school
Lots of resources

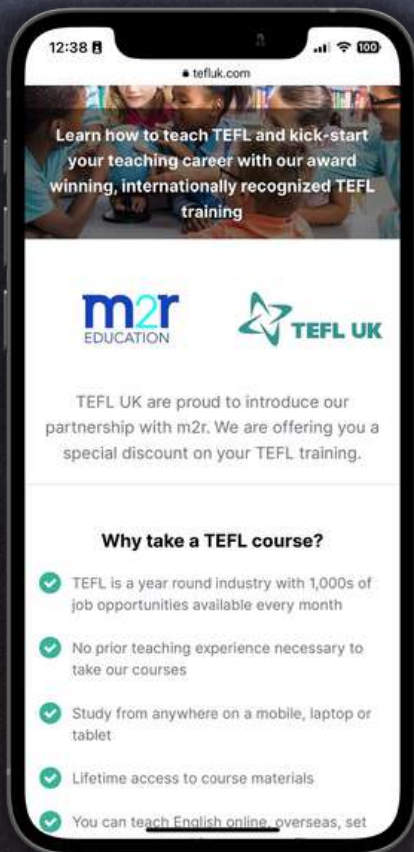


Public school

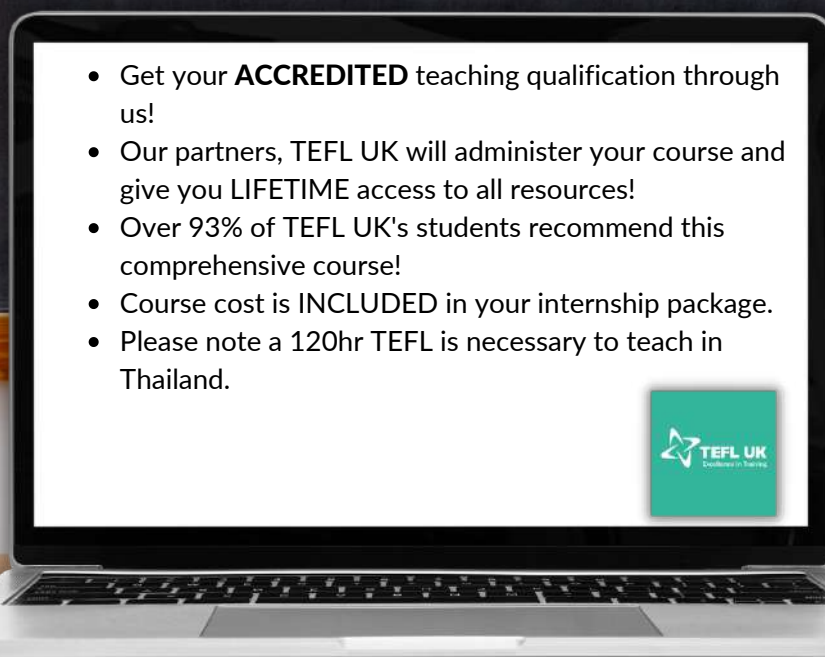
8:30am - 16:30pm
Class size 20-30
South Korean Assistant
More lesson planning required
Likely to teach at more than one
school



120-HOUR TEFL COURSE...



'TEFL UK is an excellent way to develop and enhance teaching skills. The course is very straightforward, easy to use and handle. Receiving the qualification straight after finishing the course is also amazing. Great course, can highly recommend to everyone wanting to gain an introduction and overview on teaching English!' - Johanna



THE STATS 

★★★★★
4.79
Average rating at [reviews.co.uk](https://www.reviews.co.uk)*

95%
Say they would recommend us*

5000+
Teachers placed

50000+
TEFL students trained

*based on over 500 reviews

SALARY...

Avg meal: £4.63/\$5.65/R96*



Earn up to approx.
₩2,033,660/£1,350/\$1,900/
R32,280* a month

Fun/savings
38%

Noraebang per hour:
£5.42/\$6.61/R112.32*



Beer: £2.64/\$3.22/R54.71*



Utilities
1%

local travel
10%

Food & drink
51%

Look at this!
Potential to save
and have
a lot of fun!

Completion bonus!
₩2,033,660/£1,350/\$1,900/
R32,280*



*approximate conversions, check online for current figures



EARN EXTRA MONEY!

**FREE DIGITAL
ENGLISH
LEARNING APP!**

**BEING USED BY 1.8
MILLION
CUSTOMERS
WORLD-WIDE!**

Looking to make some extra cash?

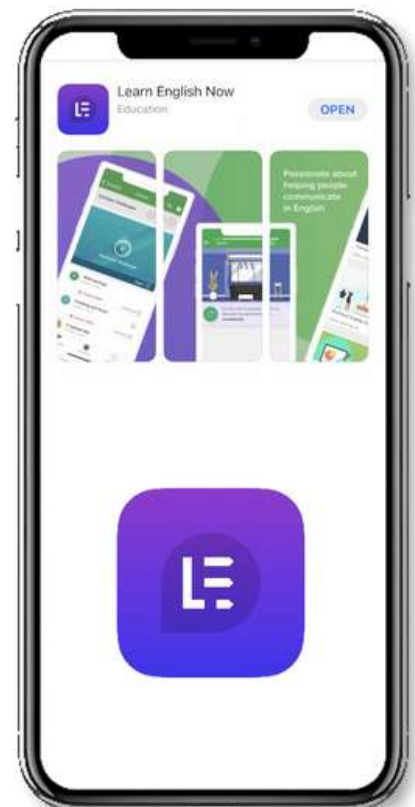
Become an 'English language influencer' with the use of your free digital English learning app!

As a member of the m2r Education family, you can offer this app to students, helping them improve their English. Included is: Academic, Vocational and General English courses at a budget price.

This doesn't replace your role as a teacher! It simply enhances the support for your students, by offering supplementary study material & activities.

Covering all four skill sets, this app even includes a Comprehensive Learner Management System (LMS), supporting both teachers and administrators.

If you're speaking to students, teachers or schools about the app, get in touch and we can discuss how this can benefit you!



THE COST...

INCLUDED...

- Guaranteed 12+ month teaching placement
- 120 hour TEFL course
- Help to create a great CV with video or audio
- Digital English learning course
- Pre-departure preparation
- Visa & documentation guidance
- Airport pickup
- One-way flight reimbursement
- Week orientation
- Free accommodation
- Earn up to approx. 2,033,660 South Korean won (£1,350/\$1,900/R32,280) a month (A very good salary for TEFL Teachers!)
- Up to approx. 2,033,660 South Korean won (£1,350/\$1,900/R32,280) completion bonus (You can use this to travel or to fund your next TEFL adventure)
- Continuous in-country support
- Academic guidance & support at schools
- Future employment & potential to extend

NOT INCLUDED...

- Flights (one-way reimbursed)
- Documentation fees
- Meals
- Accommodation deposit
- Utility bills
- First month, prior to first pay date

PLEASE ASK FOR MORE INFO!

FAR



Why would i pay for an internship?

Teaching overseas can come with its risks. You can 'do it yourself' but this can come with mistakes and problems. Purchasing an internship comes with guarantees, ensuring you get what you've paid for but also the security of knowing that you are working with an extremely knowledgeable and supportive team. By paying for an internship you avoid the horror stories, black-listed schools and ensure you have an amazing experience. And you make back what you spent on the programme within your first month!

How long can I go for?

The internship is 12 months long. It could be that you want to extend the internship or use it as a spring board to explore other opportunities in South Korea. Do it! On top of this, we can help you find future employment in other locations around the world too!

Will there be other teachers?

Hagwons usually have more than one TEFL teacher. You may be the only TEFL teacher at a public school, but you are supported by a South Korean teacher.

Can i apply with a friend/partner?

Absolutely! Let us know and we can work with our in-country team to get you all placed together

You living space is included in the internship and close to the school. Usually a one bedroom apartment, your accommodation will have all the basic essentials!

What will the accommodation be like?

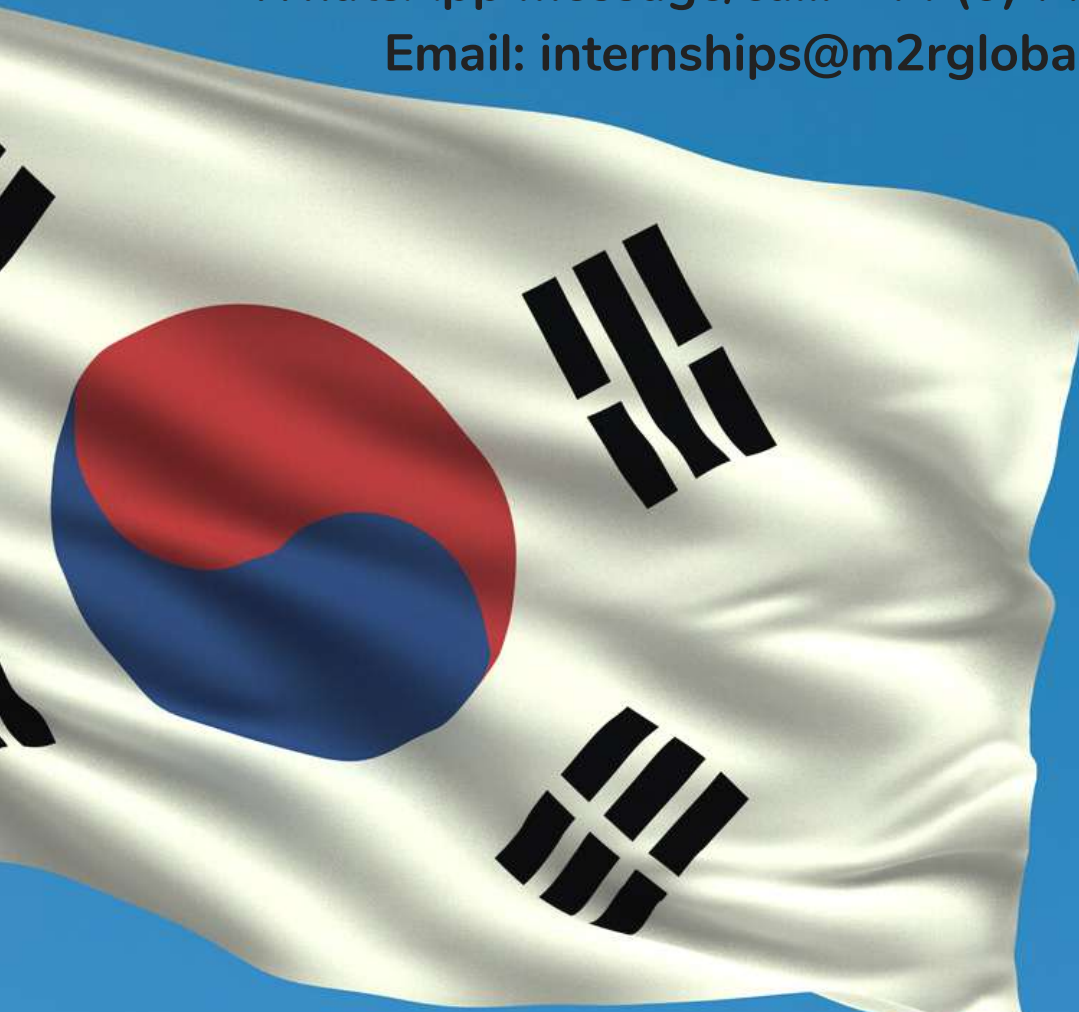
BEGIN YOUR ADVENTURE ON THE PRECIOUS K-POP PENINSULA...

Get in touch, secure your special offer, and start your internship!

Call: +44 (0) 1924 201973

WhatsApp message/call: +44 (0) 7754339001

Email: internships@m2rglobal.com



www.m2rtutors.com/teaching-internships

*Over 20 years of award-winning experience, helping
teachers begin new adventures...*

m2r

- Recruitment
- Language Training
- Private Tutoring

Award Winning International Education Services

Registered address: Langham House, 148 148
Westgate, Wakefield, WF2 9SR, UK UK