

was £2,099

NOW
£1,499

Paid Japan TEFL Internship

TEACH AND TRAVEL

m2r
education

...CUT OUT
THE
'HARD
WORK'
IN
WORKING
OVERSEAS..



4 - WHY TEACH IN JAPAN?

5 - WHAT DO I NEED?

6 - INCLUDED...

10 - SALARY...

11 - 120-HOUR TEFL COURSE...

12 - MAKE EXTRA MONEY!

TABLE OF CONTENTS

7 - WHERE?

8 - THE JOURNEY...

9 - TEACHING

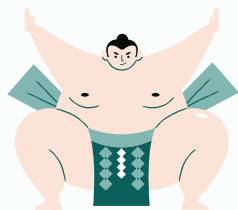
13 - COST...

14 - FAQ

WHY TEACH IN JAPAN?

Yearning to teach and travel in the Land of the Rising Sun? If you're craving the neon lights of the Tokyo metropolis or the cherry blossoms' pink splendour in Okinawa, then our Paid Japan TEFL Internship is perfect for you!

You prepare for your adventure by completing our internationally recognised 120 hour online TEFL course, earning a lifelong qualification. We provide you with orientation and placement, as well as comprehensive teacher assistance and support to help you make a smooth transition into your new role.



Our internship offers opportunities in both public and private language schools across the country, teaching children and adults. Within these 12 months you'll truly stretch those TEFL legs, utilising our training and support to gain invaluable experience as an English Sensei. And with all that free time (teaching 20-30 hours a week), you can explore everything this magical country has to offer. Bullet train from end to end, indulging on sushi, sumo, sake while gazing upon Tokyo's skyscrapers!



**You don't
need a
specific
passport!**

WHAT DO I NEED?

- **Be a fluent English speaker**
- **Completed at least 120 hour TEFL course (included with internship)**
- **Aged between 21-40 (some exceptions made)**
- **Have 12 years of schooling in English & hold a bachelor's degree**
- **No visible tattoos that can't be covered**
- **In good health and appropriately vaccinated**
- **Clear criminal record**
- **International driving permit (only for specific public-school placements)**



WHAT I DON'T NEED!

- **A specific passport**
- **Prior teaching experience**
- **Fluency in Japanese**

The teaching internship cuts out the hard-work in working overseas, with our pre-departure and in-country support. Different from a job, this package covers all the guidance and benefits needed to have a life-changing teaching experience, avoiding the mistakes people often make when working internationally.

The “do it yourself reality” can be daunting for people and also leave them vulnerable to schools that may not have their best interests at heart. Be it organising documentation, finding legit positions, academic guidance or settling in – we are here to support you.



INCLUDED...

Guaranteed 12+ month teaching placement

Teaching in Japan Course

Continuous in-country support

Pre-departure preparation and advice

Up to approx. ¥232,000 monthly salary

Reimbursement or monthly stipend for work-related transport costs

Paid holidays

Airport pickup or travel guidance

Help to create a great CV with video or audio

Free digital English course

Support at schools when teaching, as well as academic guidance

Potential to extend contract at zero cost

Visa support

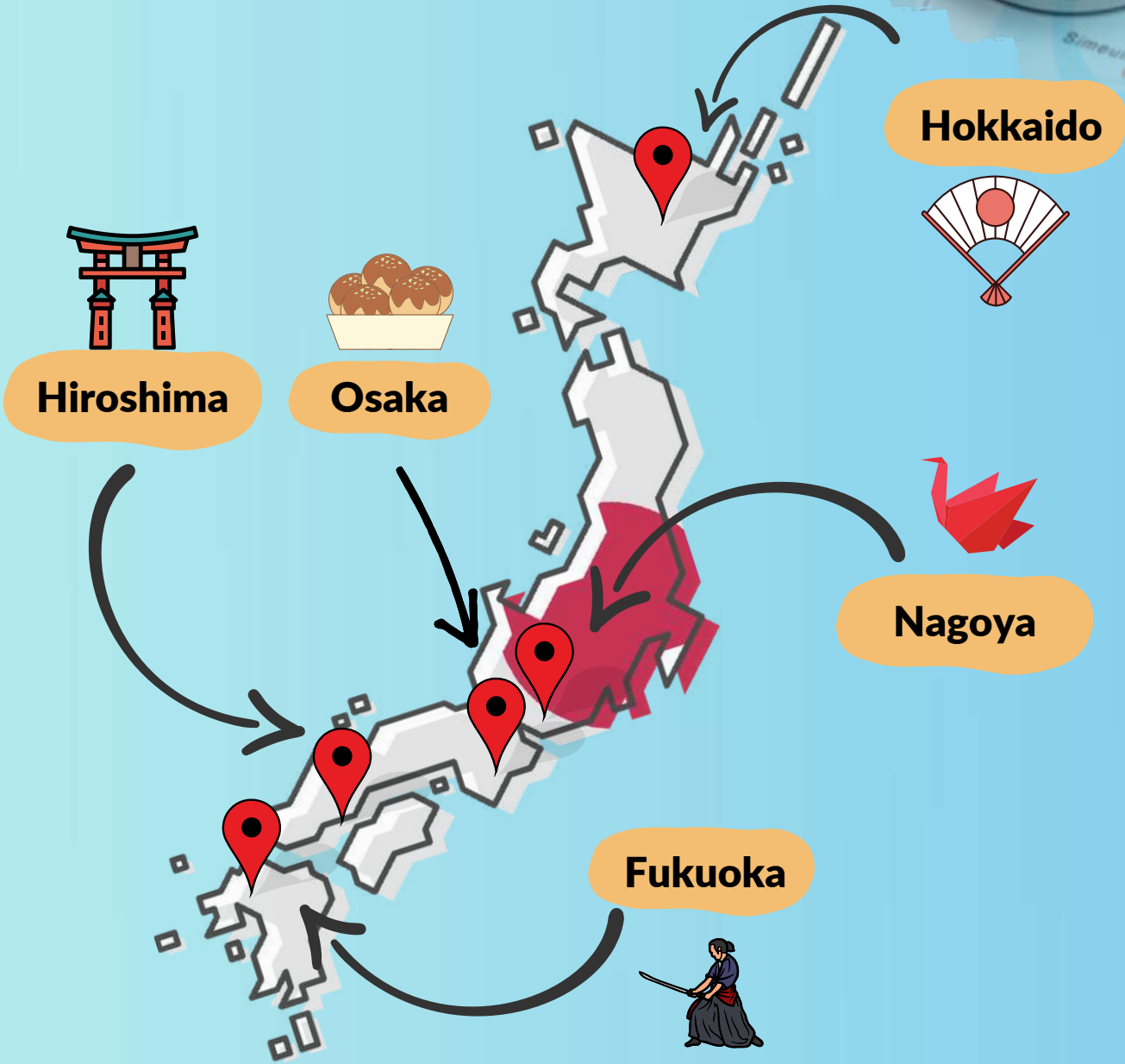
Future employment guidance

Aid finding long-term accommodation

Accredited 120 hour TEFL course



WHERE?

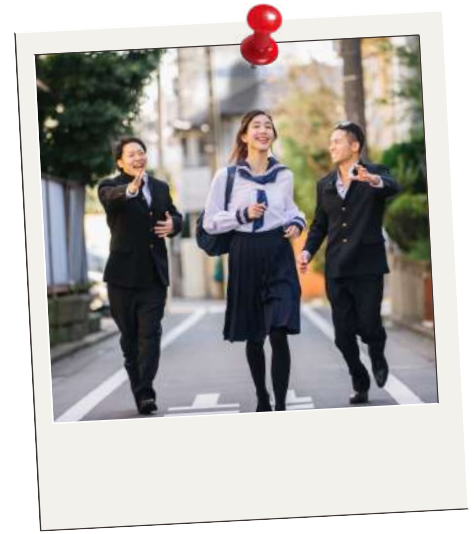


THE JOURNEY...





TEACHING...



Your role as a TEFL teacher:

- 20-30 hours a week
- 2 days off a week
- Teach students through educational lessons
- Communicate with students using English
- Create lesson plans and deliver lessons

NB: public school roles and private language centre (Eikaiwas) positions:

- Public school - teaching assistant. 50% support the teacher 50% lead the class
- Eikaiwas - more independence and responsibility

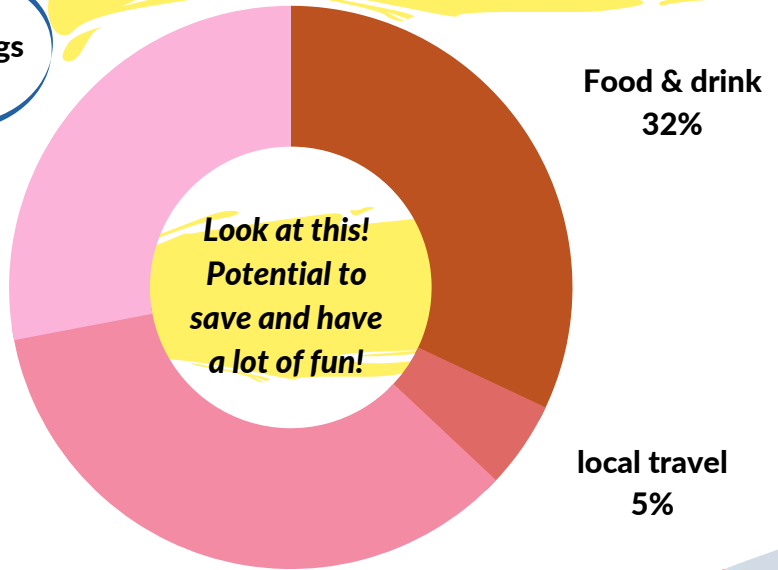
SALARY...

Avg. meal: £6.02/\$7.38/R126.14*



Earn up to approx.
¥232,000/£1,550/\$1,900/
R32,280* a month

Fun/savings
28%



Beer: £2.85/\$3.49/R59.65*



Food & drink
32%

local travel
5%

Rent & Utilities
35%

Taxi: £3.80/\$4.60/R78.62*

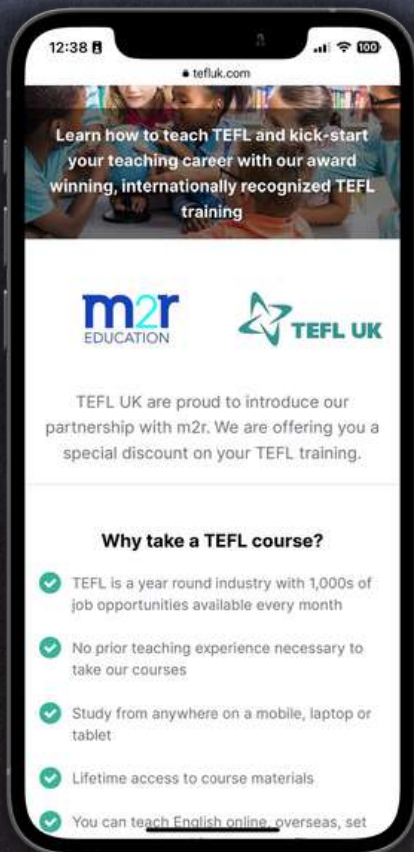


Coffee: £2.72/\$3.33/R56.92*

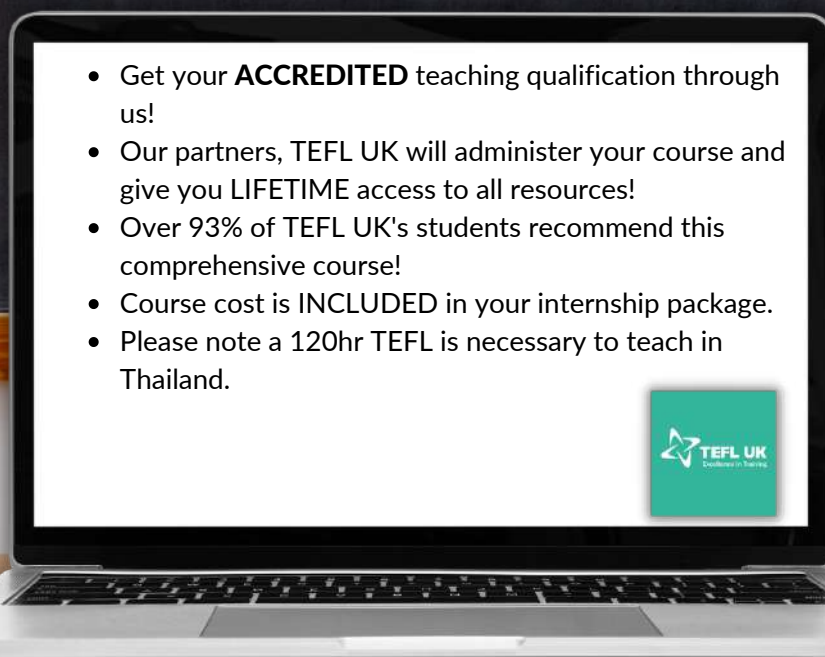


*approximate conversions, check online for current figures

120-HOUR TEFL COURSE...



'TEFL UK is an excellent way to develop and enhance teaching skills. The course is very straightforward, easy to use and handle. Receiving the qualification straight after finishing the course is also amazing. Great course, can highly recommend to everyone wanting to gain an introduction and overview on teaching English!' - Johanna



THE STATS

★★★★★

4.79
Average rating at [reviews.co.uk](https://www.reviews.co.uk)*

95%
Say they would recommend us*

5000+
Teachers placed

50000+
TEFL students trained

*based on over 500 reviews

EARN EXTRA MONEY!

FREE DIGITAL
ENGLISH
LEARNING APP!

BEING USED BY 1.8
MILLION
CUSTOMERS
WORLD-WIDE!

Looking to make some extra cash?

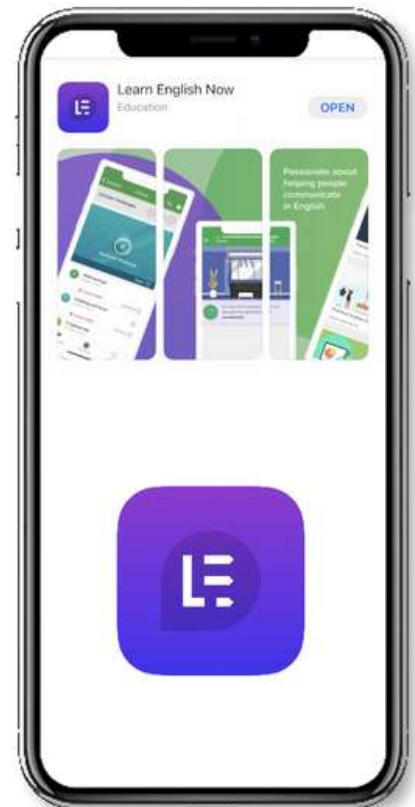
Become an 'English language influencer' with the use of your free digital English learning app!

As a member of the m2r Education family, you can offer this app to students, helping them improve their English. Included is: Academic, Vocational and General English courses at a budget price.

This doesn't replace your role as a teacher! It simply enhances the support for your students, by offering supplementary study material & activities.

Covering all four skill sets, this app even includes a Comprehensive Learner Management System (LMS), supporting both teachers and administrators.

If you're speaking to students, teachers or schools about the app, get in touch and we can discuss how this can benefit you!



THE COST...

INCLUDED...

- Guaranteed 12+ month teaching placement
- 120 hour TEFL course
- Help to create a great CV with video or audio
- Digital English learning course
- Pre-departure preparation
- Visa & documentation guidance
- Airport pickup or travel guidance
- Teaching in Japan course
- Support finding affordable long-term accommodation
- Up to approx. ¥232,000 (£1,500) monthly salary (A great salary for a TEFL Teacher!)
- Continuous in-country support
- Academic guidance & support at schools
- Future employment & potential to extend

NOT INCLUDED...

- Flights
- Documentation fees
- Meals
- Accommodation deposit
- Rent & utility bills
- First month, prior to first pay date

PLEASE Ask for more info!

FAQ



Why would i pay for an internship?

Teaching overseas can come with its risks. You can 'do it yourself' but this can come with mistakes and problems. Purchasing an internship comes with guarantees, ensuring you get what you've paid for but also the security of knowing that you are working with an extremely knowledgeable and supportive team. By paying for an internship you avoid the horror stories, black-listed schools and ensure you have an amazing experience. And you make back what you spent on the programme within your first month!

How long can I go for?

The internship is 12 months long. It could be that you want to extend the internship or use it as a spring board to explore other opportunities in Japan. Do it! On top of this, we can help you find future employment in other locations around the world too!

Can i apply with a friend/partner?

Absolutely! Let us know and we can work with our in-country team to get you all placed together

What will the accommodation be like?

The in-country team can help you find an affordable and comfortable place near the school. Usually a one bedroom apartment, your accommodation will have all the basic essentials!

LIVE YOUR DREAMS IN THE LAND OF THE RISING SUN...

Get in touch, secure your special offer, and start your internship!

Call: +44 (0) 1924 201973

WhatsApp message/call: +44 (0) 7754339001

Email: internships@m2rglobal.com

www.m2rtutors.com/teaching-internships

*Over 20 years of award-winning experience, helping
teachers begin new adventures...*



Award Winning International Education Services

Registered address: Langham House, 148
Westgate, Wakefield, WF2 9SR, UK